

## Pacific Rim TJD12000/DLPN-20000/TJD-25000 Teardown And Pull Pin Direction Change Procedure

1. Remove two screws that hold down the cap on the jack and set aside.
2. Rotate jack cross shaft until you locate the gear retaining pin.



3. Drive the gear retaining pin out of the cross shaft. Note: start removing the pin and rotate the shaft so the pin is removed at an angle so it does not jam against the bottom gear.



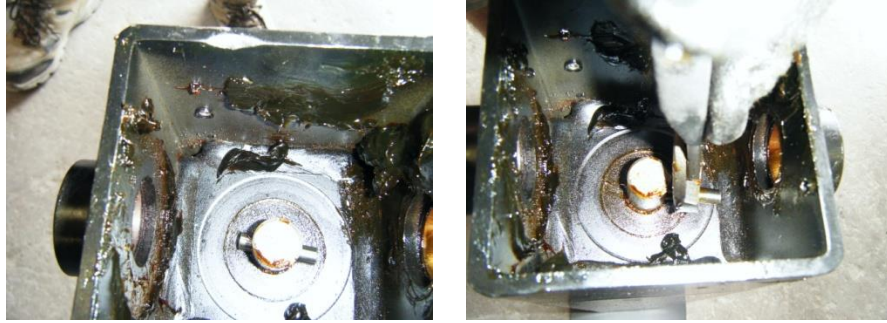
4. Remove the pin and set to the side. Slowly pull the cross shaft out of the jack removing the gear and the spacer shaft. Make reference to which side the gear is located on the cross shaft and the order of the parts.



5. After removing the cross shaft, top miter gear, and spacer you should see the lower miter gear. With lower miter gear exposed raise lower miter gear straight up. Note: nothing is holding in the lower miter gear except the upper miter gear and cross shaft.



6. Under the gear you will find a second roll pin which supports the weight of the bottom leg. Insure the bottom leg of the jack is supported and the pin should easily slide out of the jack.



7. Once the bottom roll pin is removed the inner leg is ready to be separated from the outer leg. With the inner leg on a flat surface raise the upper tube off of the inner leg. Note: they should slide apart easily.



8. Once the two halves are separated you should see the inner screw with a bearing set on top. Rotate the inner tube to a position that the pull pin is at the desired direction.



9. Re-assemble jack in reverse order. Insert inner leg and re-install the lower pin, replace the lower miter gear, install gear set and spacer on cross shaft. Re-install the pin into the upper gear and shaft. Test jack to insure smooth operation and grease. Re-install cap and two screws and you are complete.

