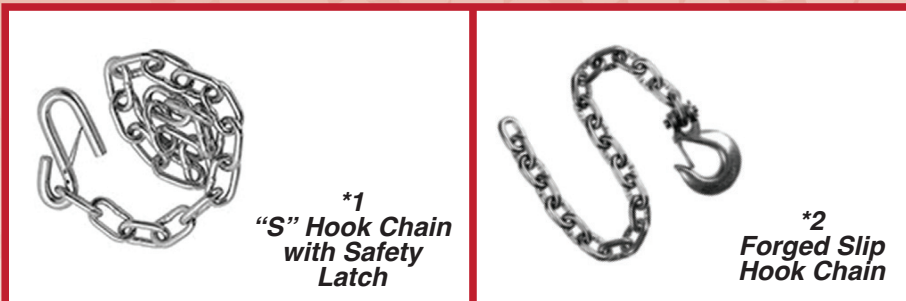




FORGED D-RINGS AND SAFETY CHAIN



Product Code	Diameter	Interior Dimensions	Safe Working Load (lbs)	Ultimate Breaking Strength (lbs)	Description	Unit Wt.
DR-120W	1/2"	2-1/2"x2-3/8"	4,080	11,780	Forged from C1045 steel with weld on mounting bracket	.82
DR-12B	1/2"	2-1/2"x2-3/8"	4,080	11,780	Forged from C1045 steel with two hole bolt on mounting bracket	.99
DR-580W	5/8"	3"x3"	6,130	18,390	Forged from C1045 steel with weld on mounting bracket	1.87
DR-340W	3/4"	3"x3"	9,120	26,500	Forged from C1045 steel with weld on mounting bracket	2.41
DR-1034W	1"	3"x4"	15,586	46,760	Forged from C1045 steel with weld on mounting bracket	4.91
RRING-Q6000	3/8"	4.5"x5" (Overall)	2,000	6,000	Bolt-on recessed D-Ring	1.11



Product Code	Cell Dia.	Overall Length	Capacity (lbs)	Cell Grade	Hook Description	Unit Wt. (lbs)
SC31624	3/16"	24"	3,200	30	1 S-Hook with safety latch (*1)	.95
SC31627	3/16"	27"	3,200	30	1 S-Hook with safety latch (*1)	1.1
SC31648	3/16"	48"	3,200	30	2 S-Hooks (1 hook on each end of chain assembly) with safety latches (*1)	1.9
SC1427	1/4"	27"	5,200	30	1 S-Hook with safety latch (*1)	1.7
SC1448	1/4"	48"	5,200	30	2 S-Hooks (1 hook on each end of chain assembly) with safety latches (*1)	3.0
SC1454	1/4"	54"	5,200	30	2 S-Hooks (1 hook on each end of chain assembly) with safety latches (*1)	3.4
SC1460	1/4"	60"	5,200	30	2 S-Hooks (1 hook on each end of chain assembly) with safety latches (*1)	3.7
SC113230	5/16"	30"	7,600	30	1 S-Hook with safety latch (*1)	2.7
SC113254	5/16"	54"	7,600	30	2 S-Hooks (1 hook on each end of chain assembly) with safety latches (*1)	5.0
SC1430-G43	1/4"	30"	7,800	43	1 Forged slip hook with safety latch (*2)	2.1
SC51635-G43	5/16"	35"	11,700	43	1 Forged slip hook with safety latch (*2)	3.6
SC3835-G43	3/8"	35"	16,200	43	1 Forged slip hook with safety latch (*2)	5.8
SC1436-G70	1/4"	36"	12,600	70	1 Forged slip hook with safety latch (*2)	2.5
SC3835-G70	3/8"	35"	26,400	70	1 Forged slip hook with safety latch (*2)	5.2