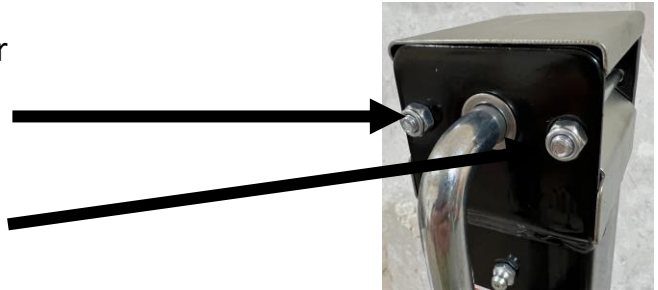


## 8K Support / 7K Lift Capacity Sidewind Jack Replacement Parts Instruction



To gain access to gear box remove the two carriage bolts and nuts. Can use a 10mm socket.



Wipe excess grease from gears.

Remove the wire side gear pin keeper.



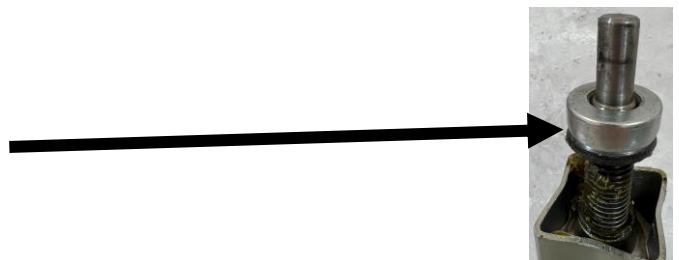
Use a nail punch and lightly tap the side spline/grooved gear pin so part of it is exposed on the other side of the side gear. Then pull through with a pliers.



You will then be able to slide out the handle assembly.

Then remove bottom gear, pin, bushing and washer.

Then you can slide the inner tube assembly out to get to the bearing.





# 8K Support / 7K Lift Capacity Sidewind Jack Replacement Parts Instruction

Reverse process after replacing the part needed.

Below are replacement parts available.

**TJD-7000S-HD**– Handle replacement with pin and bushing for RAM 5K and 7K side wind square tube jacks



**TJD-7000S-BU**– Bushing for RAM 5K and 7K side wind square tube jacks



**TJD-7000S-CP**– Cap with bolts for RAM 5K and 7K side wind square tube jacks.



**TJD-7000-BR**– Bearing for 5K and 7K square tube jacks.



**TJD-7000S-GR**– Gear kit for RAM 5K and 7K side wind square tube jacks



**TJD-7000-FT** – Drop leg for 7K square tube jacks.



**TJD-7000-PN** – Pin for drop leg on 7K square tube drop leg jacks.

