



# **1500lb Capacity Brake Winch Installation and Operation Instructions**



**BW-1500 Single Handle**

**BWDH-1500 Dual Handle**

Pacific Rim International, LLC  
19120 SE 34<sup>th</sup> Street., Suite 105  
Vancouver, WA 98683  
Phone: 360-859-3828



**READ INSTRUCTIONS CAREFULLY BEFORE ATTEMPTING TO INSTALL, OPERATE AND SERVICE THIS BRAKE WINCH. FAILURE TO COMPLY WITH INSTRUCTIONS COULD RESULT IN SERIOUS OR FATAL INJURY. THIS BRAKE WINCH IS NOT TO BE USED FOR LIFTING, SUPPORTING OR TRANSPORTING PEOPLE, OR LOADS OVER AREAS WHERE PEOPLE COULD BE PRESENT.**

NEVER allow people to use this product that are unfamiliar with the operating instructions.

Pacific Trailer Products/Pacific Rim International cannot be held liable for improper installation, use, or maintenance of this product.

A loud clicking sound from the ratchet should always be heard while lifting. If a loud clicking sound is not heard do not use. Replace the winch or ratchet components right away before using.

Make sure to follow crank rotation and operating instructions. Disregard could cause bodily harm or property damage and/or death.

DO NOT use this winch as a human hoist. NEVER allow anyone to be positioned on, around or under the load being lifted or moved.

DO NOT exceed the maximum rated capacities.

Always inspect the hook and cable before each use and make sure there is no damage. Never use kinked, frayed or worn cable. If any signs of that replace the cable immediately.

If the cable or hook breaks, the cable will whip violently and can inflict serious injury and/or property damage.

Make sure to maintain a minimum of **three** complete wraps of cable on the drum.

The rating on cable and hook that are on the winch must be strong enough to support the load to be moved.

DO NOT release the crank handle unless the ratchet pawl is fully engaged in the winch gear teeth (as verified by load clicking sound) and the load is supported.

Never operate with hands that are wet, oily or slippery. Make sure to maintain a firm grip on the winch handle.

Never leave a load hanging from the winch while it is unattended. Others may attempt to operate the winch. This could create an unsafe condition.

Do not get oil or grease on the friction disks. This could allow the load to slip or fall.

RAM 1500lb brake winches are rated for that capacity on the first layer. Full drum capacity is 700lbs. Capacity is always reduced as cable line layers increase on the drum.

Breaking strength of cable used on this winch must be greater than 4,500lbs

Cable/hook must be securely fastened to object that is being lifted users securely fastened to the brake drum. (see page 5 for attaching to brake drum)

Keep a film of automotive type grease on all teeth, outside diameter of the drum bearing, ratchet pawl pivot, bushings and pinion threads users.

Check brake friction disks for wear. Less than 1/16" thickness, they should be replaced.

A loud clicking sound from the ratchet should always be heard while lifting. If a loud clicking sound is not heard do not use. Replace the winch or ratchet components right away before using.

Before using, make sure fasteners are properly tightened. It is the installer/end users responsibility that the brake winch is adequately attached to a metal structure to support all loads.

Mount the winch to a metal structure that is capable of supporting at least 5 times the load the winch is pulling.

These brake winches are designed for hand operating only. Never use a drill, impact wrench or other electrical device to operate these hand brake winches.

Handle hardware will be mounted on the brake winch assembly but the handles are not installed (separate).

For the single handle brake winch (BW-1500) remove handle nut, washer and spring from brake winch assembly. Place handle against brake winch assembly then reinstall the spring, then washer and then the nut. Make sure mounting hardware is tightened snug.

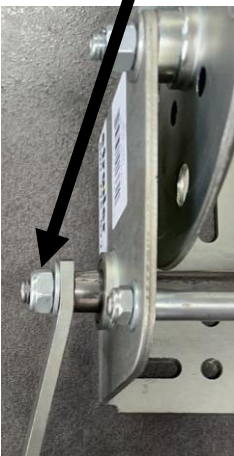
For the dual handle brake winch (BWDH-1500) remove the nut from each side of the brake winch assembly. Place handles against the brake winch assembly and reinstall the handle nuts. Make sure mounting hardware is tightened snug.

See photos on next page.

Single handle  
model spring,  
washer and bolt



Dual handle model  
mounting  
hardware



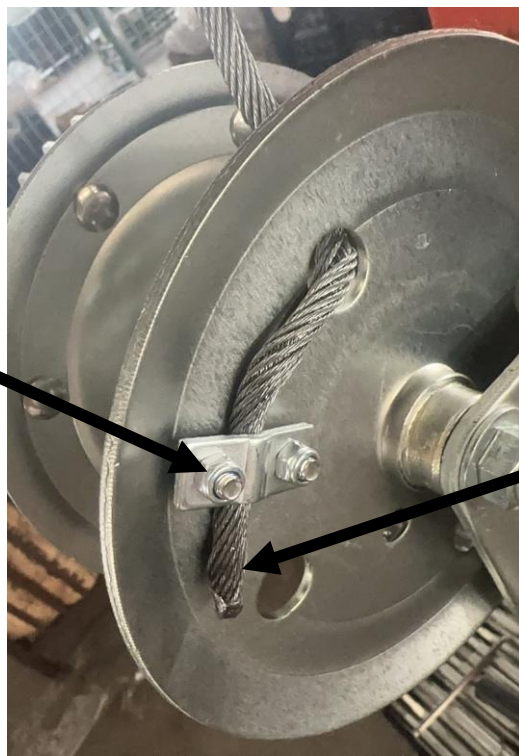
## Cable Attachment

Feed cable over the top of the drum and then through the drum side hole. Then through the cable keeper. Cable to extend past the cable keeper by one inch.

Tighten cable keeper lock nuts until cable is adequately clamped (approximately 20-30 in lbs)

Make sure cable is always pulling straight off the winch and not at an angle. Avoid having the cable rubbing against the sides of the drum as that can cause damage to the cable.

Cable Keeper



Cable 1" past  
cable keeper

Cable is to be wound so  
the cable comes out from  
the top side of the drum  
(opposite the bottom  
mount side)

Spool the cable tightly  
and evenly on the drum.



Mounting Plate Dimensions  
(in inches)

