

Self Latching Gooseneck Couplers

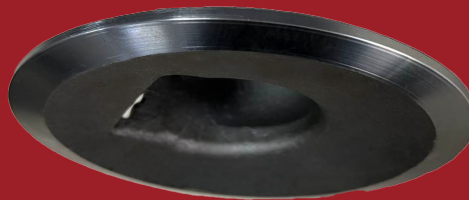
STRONG & RELIABLE
RAM
PREMIUM
SERIES



GCPN-25009

GCSQ-30009

- » These RAM Gooseneck couplers feature a machined cast head that includes a large funnel design to aid in hooking to hitch ball.
- » Patent pending self latching coupling mechanism.
- » Will hold in an open position for unhooking the hitch ball.
- » Large metal handle for ease of operation.
- » Include two set screws as well as load bearing pin to meet SAE J2638 standard.
- » 2-5/16" ball pocket, 4.5" outer tube, 8" adjustability, raw finish.
- » 25,000 lb and 30,000 lb capacity round tube (GCPN-25009 and GCPN-30009)
- » 25,000 lb and 30,000 lb capacity square tube (GCSQ-25009 and GCSQ-30009)
- »



**Machined Cast
Head Funnel**

NEW!

www.ramtrailerproducts.com