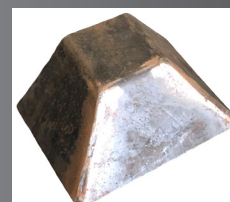




Hydraulic Accessories Products Catalog





Hydraulic Diverter

Diverts hydraulic fluid allowing one HPU to operate either the hydraulic jack or hoist (dump) circuits

Ready to couple with 9/16-18 SAE #6 JIC 37 degree flare hydraulic fittings (not included)

RH-6WFD Hydraulic Fluid Diverter



Hydraulic Flow Divider

Use when operating two hydraulic jacks with one HPU

Receives flow from port A on HPU then divides the flow equally to run two hydraulic jacks

All ports are SAE #6 O-Ring female, requires adapters to couple with 9/16-18 SAE #6 JIC 37 degree flare hydraulic hose

HFD-612 Flow Divider





Prop Kit

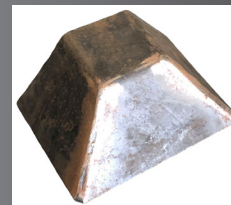


Weld on prop kits come raw for weld on purposes.

Allows to prop the dump box in the upper dump position

Include safety arm, safety arm bracket and safety arm cup

RH-PROPKIT



Hinges

Hinges that are welded to dump trailer frame and dump box and act as rear pivot point.

Medium hinges typically on dump trailers that use the 310 or the 516 hoist assemblies.

RH-MHG medium hinge assembly

Large hinges are typically on dump trailers that use the 520 hoist assemblies and larger.

RH-LHG heavy duty hinge assembly

Both the medium and large hinges includes a grease zerk



Medium Hinge



Large Hinge



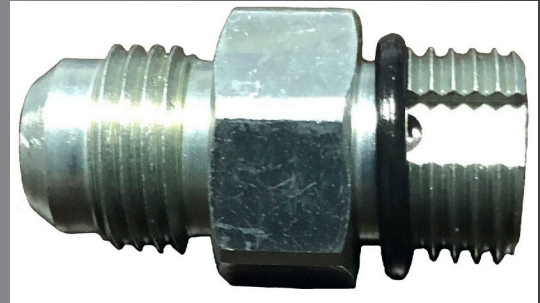
Flow/Load Control Valve

For use with jack and hoist cylinders on the extend (base) port only

Controls hydraulic flow out of the extend port back to the HPU

RH-LDCTL 9/16-18 SAE #6 JIC 37 degree flare fitting flow/load control valve

NOT for use with RAM HJ-15070 counter balance series jacks



Hydraulic Fittings

For use with hydraulic lines and connections to cylinders, HPU units, etc

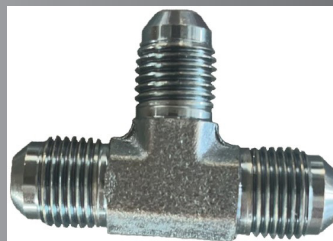
May be used at input and output on hydraulic flow divider and HPU

RH-FIT38 3/8" #6 SAE Hydraulic Fitting

RH-FIT38L 3/8" #6 SAE Hydraulic L Fitting
- May be used at input and output on hydraulic flow divider and HPU

RH-FIT38T 3/8" #6 SAE Hydraulic T Fitting
- Used to join two hydraulic return lines into one return line to HPU

All fittings are 9/16-18 SAE #6 JIC 37 degree flare fitting





Collar Locks

For use with hoist frames

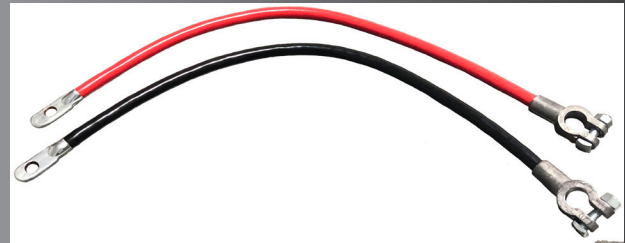
RH-LKCL-20 2.0" locking collar for use with 310 hoist assemblies

RH-LKCL-25 2.5" locking collar for use with 516, 520 and 620 hoist assemblies



Battery Cables and Battery Strap

RH-BCBL-20GA Battery Cables, one red, one black GA 4, 20"



RH-STRP Rubber Battery Strap



Hydraulic Hoses

Hydraulic hose assemblies with 9/16-18 SAE #6 JIC 37 degree flare fittings

RH-HS38110 110" long assembly

RH-HS38120 120" long assembly

